

# CHRISTMAS EVE

Is 40: 5

COMM.

**R**

E- ve- lá- bi- tur \* gló- ri- a Dó- mi-

ni: et vi- dé- bit om- nis ca- ro sa- lu-

tá- re De- i nos- tri.

Ps 23

1. Dómi- ni est terra, et ple- ni- túdo e- jus: \* orbis

terrá- rum, et uni- vérsi qui há- bi- tant in e- o.

2. Qui- a ipse super má- ri- a fundá- vit e- um: \*

et super flúmi- na præpa- rá- vit e- um. *Ant.*

3. Quis ascéndet in montem Dómi- ni? \* aut quis

sta- bit in loco sancto e- jus? *Ant.*

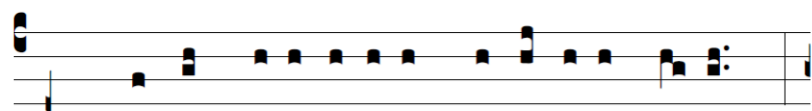
4. Innocens má- nibus et mundo corde, qui non ac-

cé- pit in vano á- nimam su- am, \* nec ju- rá- vit in

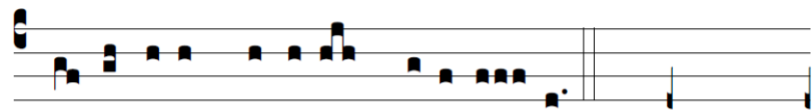
do- lo pró- ximo su- o. *Ant.*

5. Hic accí- pi- et bene- dicti- ónem a Dómi- no: \*

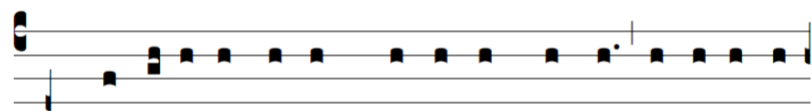
et mi- se- ri- córdi- am a De- o, sa- lu- tá- ri su- o.



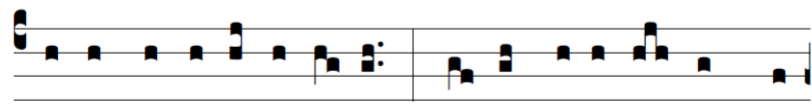
6. Hæc est gene-rá-ti-o quæ-rénti-um e- um, \*



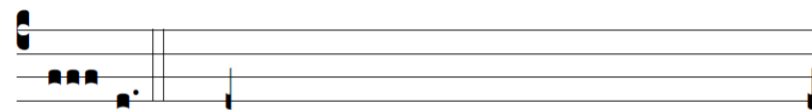
quæ-rénti-um fá-ci-em De-i Ja- cob. *Ant.*



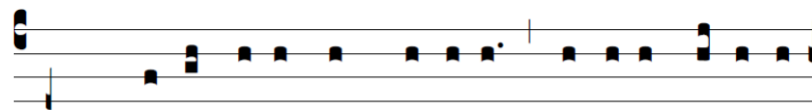
7. Attólli-te portas, prínci-pes, vestras, et e-le-vá-



mi-ni, portæ æ-terná-les: \* et intro-í-bit Rex gló-



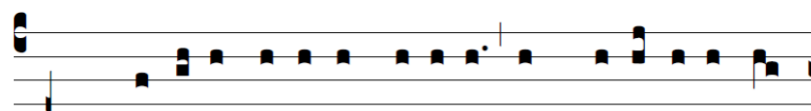
ri- æ. *Ant.*



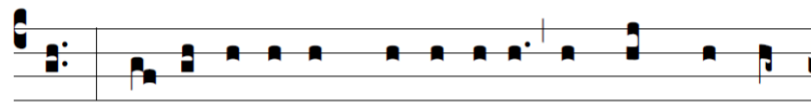
8. Quis est iste Rex gló-ri-æ? Dóminus fortis et



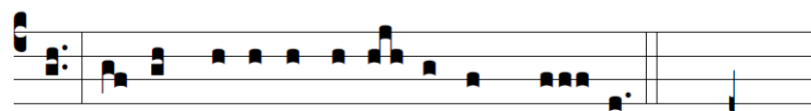
pot-ens: \* Dóminus pot-ens in præ-li- o. *Ant.*



ÿ. Gló-ri-a Patri, et Fí-li-o, et Spi-rí-tu-i Sanc-

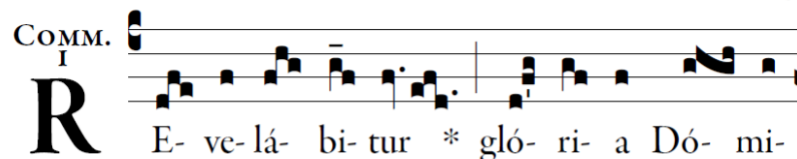


to. \* Sic-ut e-rat in princí-pi-o, et nunc, et sem-



per, et in sæcu-la sæcu-ló-rum. A-men. *Ant.*

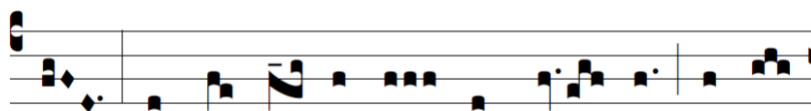
*Is 40: 5*



COMM.

**R**

E- ve-lá- bi- tur \* gló- ri- a Dó- mi-



ni: et vi-dé- bit om- nis ca- ro sa- lu-



tá- re De- i nos-tri.