

CHRISTMAS AT MIDNIGHT

Ps 109: 3

COMM.
VI

I

N splendó-ribus * sanctó- rum, ex ú- te-

ro an-te lu-cí- fe- rum gé- nu- i te.

Ps 109

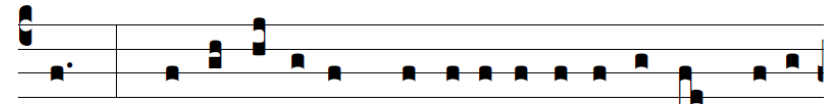
1. Di- xit Dóminus Dómino me- o: * Sede a dex-

tris me- is: *Ant.*

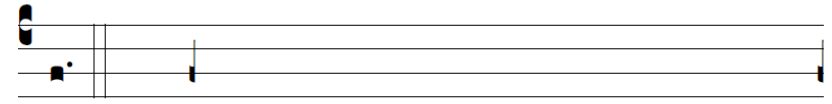
2. Do- nec ponam in- i- mí- cos tu- os, * scabéllum

pedum tu- ó- rum. *Ant.*

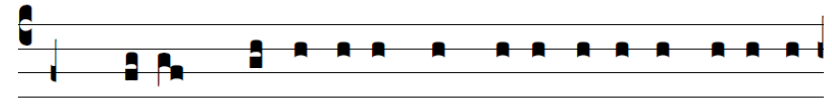
3. Virgam virtú- tis tu- æ emíttet Dómi- nus ex Si-



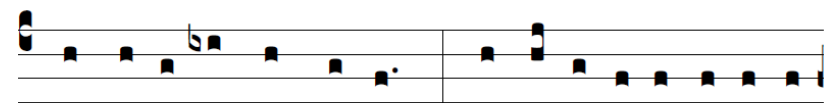
on: * domi- ná- re in mé- di- o in- imi- có- rum tu- ó-



rum. *Ant.*



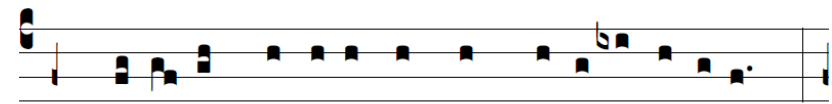
4. Tecum princí- pi- um in di- e virtú- tis tu- æ in



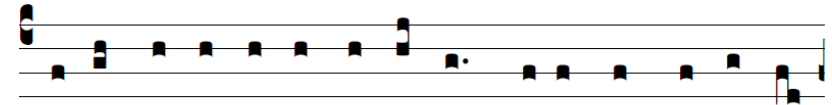
splendó- ri- bus sanctó- rum: * ex ú- te- ro ante lu- cí-



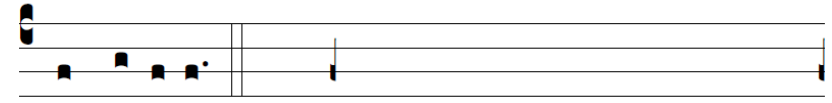
fe- rum gé- nu- i te. *Ant.*



5. Ju- rá- vit Dóminus, et non pœni- té- bit e- um: *



Tu es sa- cérdos in æ- térnium secúndum ór- di- nem



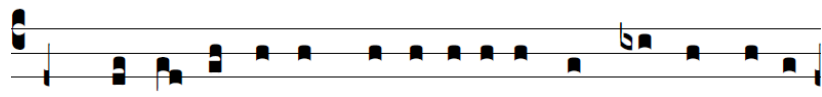
Melchí- sede- ch. *Ant.*



6. Dómi-nus a dextris tu-is, * confré-git in di-e



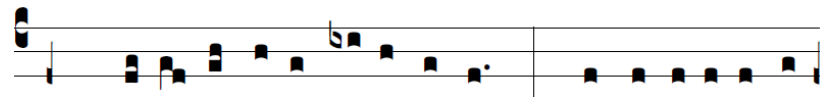
i-ræ su-æ re-ges. *Ant.*



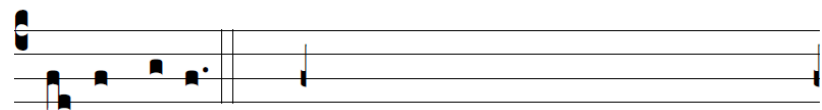
7. Ju-di-cá-bit in na-ti-ónibus, imple-bit ru-í-



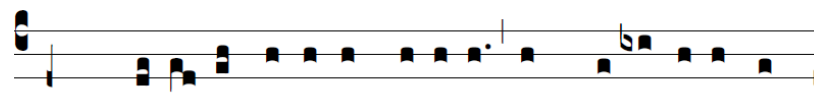
nas: * conquassá-bit cá-pi-ta in terra multó-rum.



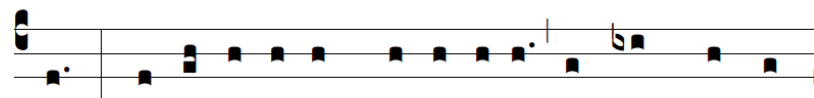
8. De torrén-te in vi-a bi-bet: * proptér-e-a ex-al-



tá-bit caput. *Ant.*



ÿ. Gló-ri-a Patri, et Fí-li-o, et Spi-rí-tu-i Sanc-



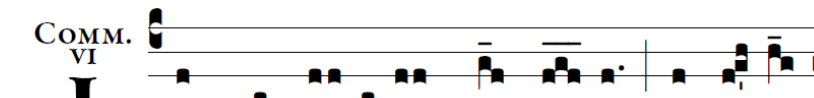
to. * Sic-ut e-rat in princí-pi-o, et nunc, et sem-



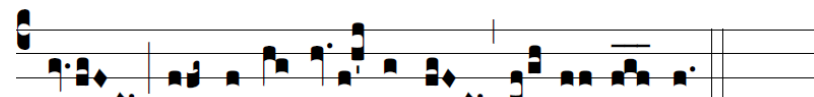
per, et in sǎcu-la sǎcu-ló-rum. Amen. *Ant.*

COMM.

VI



IN splendó-ribus * sanctó-rum, ex ú-te-



ro an-te lu-cí-fe-rum gé-nu-i te.